

**LOUISIANA REGION IV HEALTH DEMOGRAPHICS**

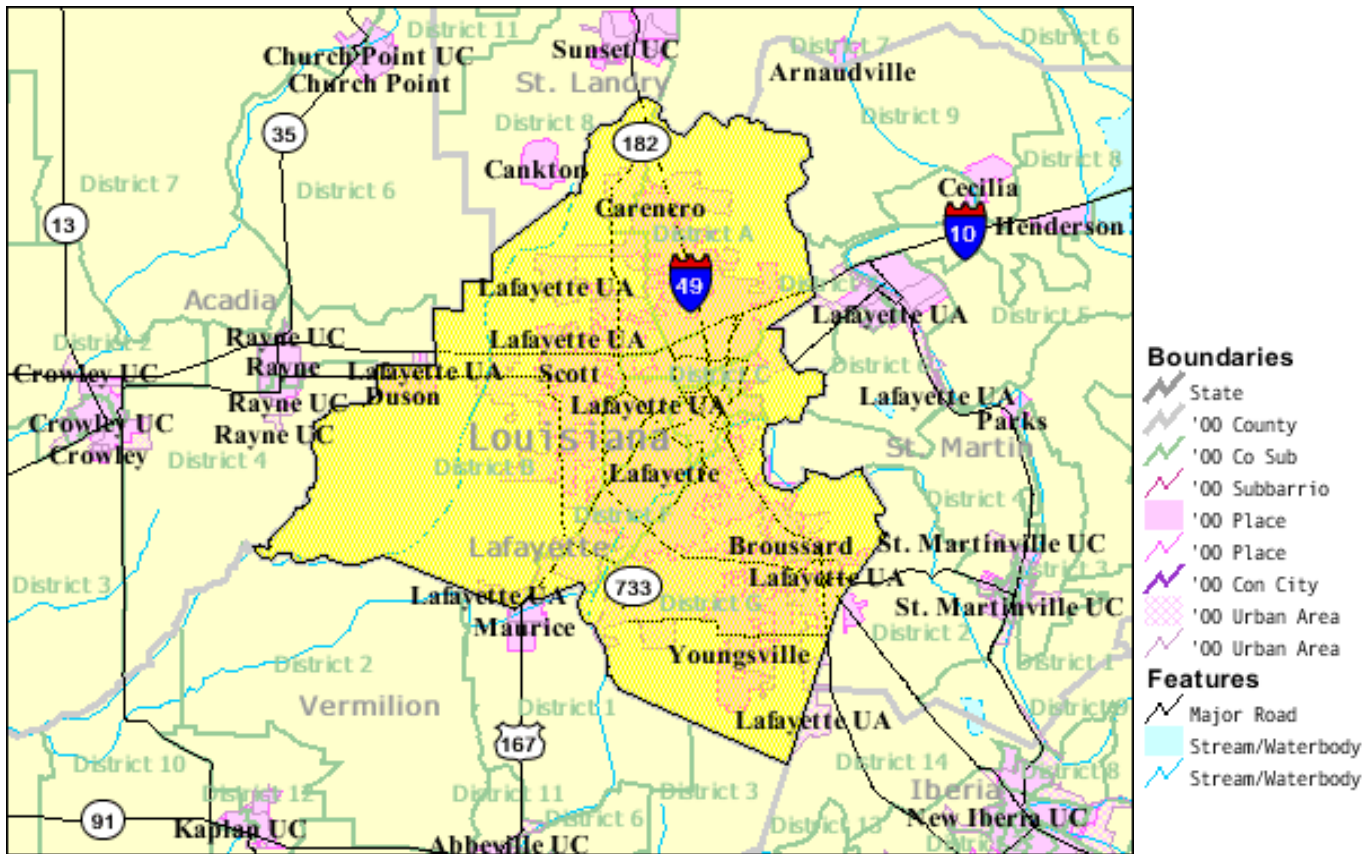


**LAFAYETTE PARISH**

## TABLE OF CONTENTS – LAFAYETTE PARISH

	Page
LAFAYETTE PARISH MAP	3
LAFAYETTE PARISH YEAR 2000 DEMOGRAPHICS – SEX AND AGE I	4
LAFAYETTE PARISH YEAR 2000 DEMOGRAPHICS – SEX AND AGE II	5
LAFAYETTE PARISH YEAR 2000 DEMOGRAPHICS – RACE	6
LAFAYETTE PARISH YEAR 2000 DEMOGRAPHICS – HOUSEHOLD BY TYPE	7
1999 POVERTY STATUS BY AGE IN LAFAYETTE PARISH	8
1999 POVERTY STATUS BY AGE AND HOUSEHOLD TYPE IN LAFAYETTE PARISH- UNDER 65 YEARS	9
1999 POVERTY STATUS BY AGE AND HOUSEHOLD TYPE IN LAFAYETTE PARISH- 65 YEARS AND OVER	10
1999 POVERTY STATUS OF INDIVIDUALS IN LAFAYETTE PARISH – AGE GROUPS	11
1999 POVERTY STATUS OF INDIVIDUALS IN LAFAYETTE PARISH – PERCENT OF POVERTY LEVEL	13
PERCENT OF PERSONS BELOW THE POVERTY LEVEL IN 1999 BY 5-DIGIT ZIP CODE TABULATION AREA IN LAFAYETTE PARISH	14
PERCENT OF PERSONS BELOW THE POVERTY LEVEL IN 1999 BY 5-DIGIT ZIP CODE TABULATION AREA IN LAFAYETTE PARISH - ZOOM	15
PERCENT OF PERSONS BELOW THE POVERTY LEVEL IN 1999 BY 5-DIGIT ZIP CODE TABULATION AREA IN LAFAYETTE PARISH – LEGEND	16
POPULATION BELOW POVERTY LEVEL BY ZIP CODE IN IBERIA PARISH	17
LAFAYETTE PARISH - NOTES	18

# LAFAYETTE PARISH MAP

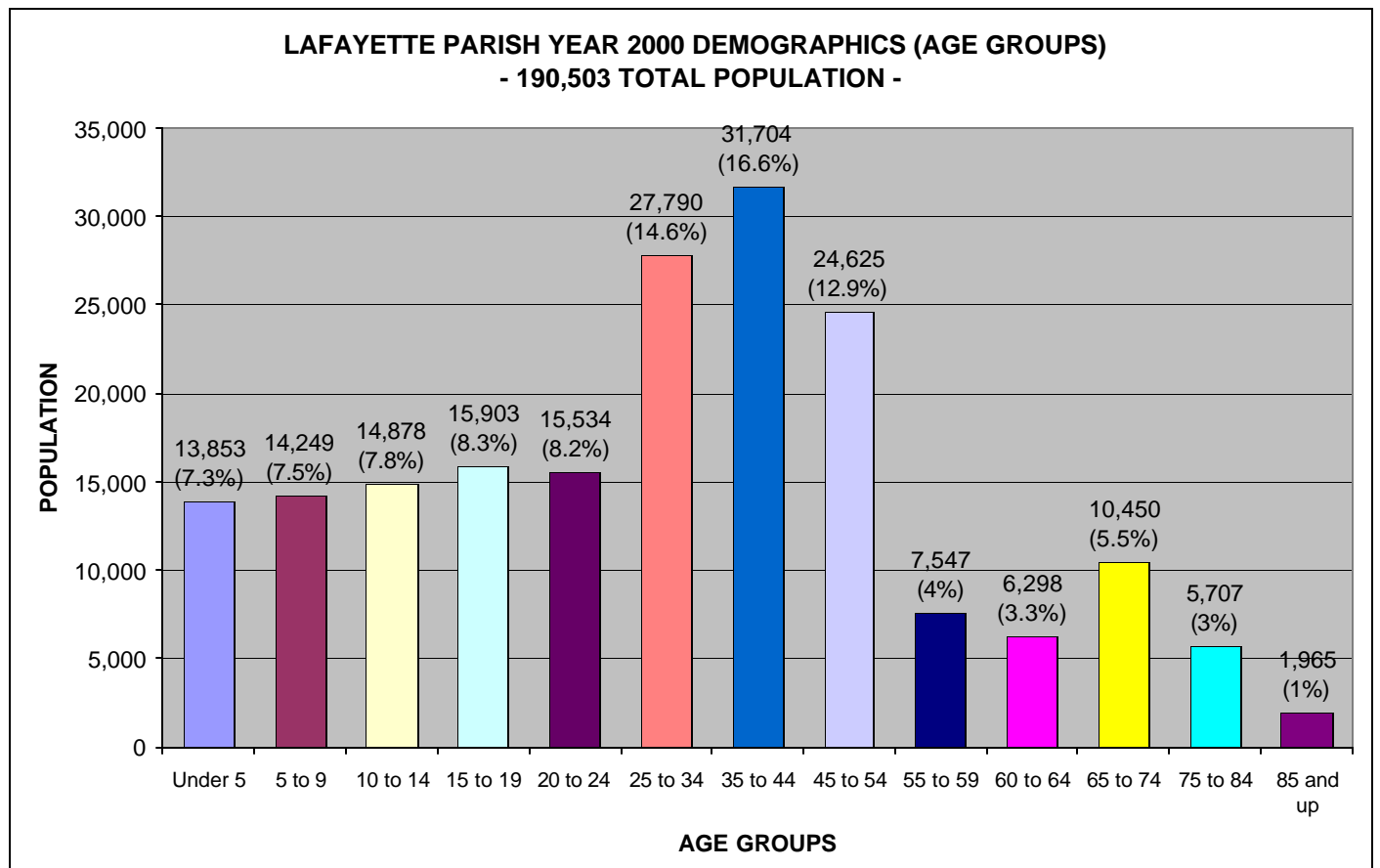


Source: US Census Bureau, American Fact Finder, Reference Map for Lafayette Parish, Louisiana; Retrieved June 2004, from [http://factfinder.census.gov/servlet/DTGeoSearchByListServlet?ds\\_name=DEC\\_2000\\_SF3\\_U&lang=en&ts=112716101070](http://factfinder.census.gov/servlet/DTGeoSearchByListServlet?ds_name=DEC_2000_SF3_U&lang=en&ts=112716101070)

## LAFAYETTE PARISH YEAR 2000 DEMOGRAPHICS – SEX AND AGE I

LAFAYETTE PARISH YEAR 2000 DEMOGRAPHICS		
SEX AND AGE	Value	Percent
Total Population	190,503	100.00%
Male	92,489	48.50%
Female	98,014	51.50%
Under 5	13,853	7.30%
5 to 9	14,249	7.50%
10 to 14	14,878	7.80%
15 to 19	15,903	8.30%
20 to 24	15,534	8.20%
25 to 34	27,790	14.60%
35 to 44	31,704	16.60%
45 to 54	24,625	12.90%
55 to 59	7,547	4.00%
60 to 64	6,298	3.30%
65 to 74	10,450	5.50%
75 to 84	5,707	3.00%
85 and up	1,965	1.00%

Source: Melissa Date – Demographics Lookups, Lafayette Parish; Retrieved June 2004, from <http://lookup.melissadata.com/lookups/demo2000.asp?ident=4030>

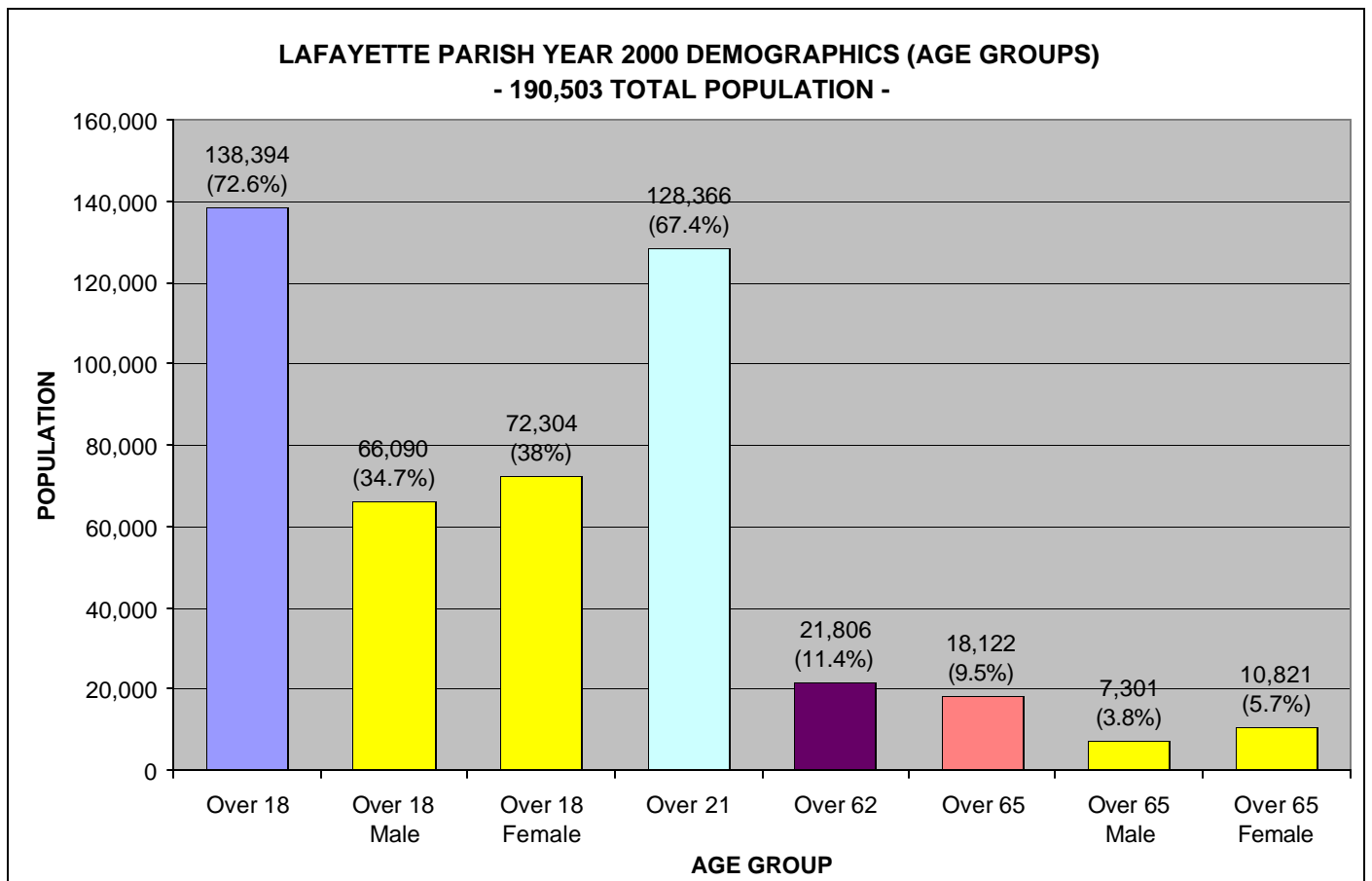


Source: Melissa Date – Demographics Lookups, Lafayette Parish; Retrieved June 2004, from <http://lookup.melissadata.com/lookups/demo2000.asp?ident=4030>

## LAFAYETTE PARISH YEAR 2000 DEMOGRAPHICS – SEX AND AGE II

LAFAYETTE PARISH YEAR 2000 DEMOGRAPHICS		
SEX AND AGE	Value	Percent
Over 18	138,394	72.60%
Over 18 Male	66,090	34.70%
Over 18 Female	72,304	38.00%
Over 21	128,366	67.40%
Over 62	21,806	11.40%
Over 65	18,122	9.50%
Over 65 Male	7,301	3.80%
Over 65 Female	10,821	5.70%
Median Age	32.4	n/a

Source: Melissa Date – Demographics Lookups, Lafayette Parish; Retrieved June 2004, from <http://lookup.melissadata.com/lookups/demo2000.asp?ident=4030>

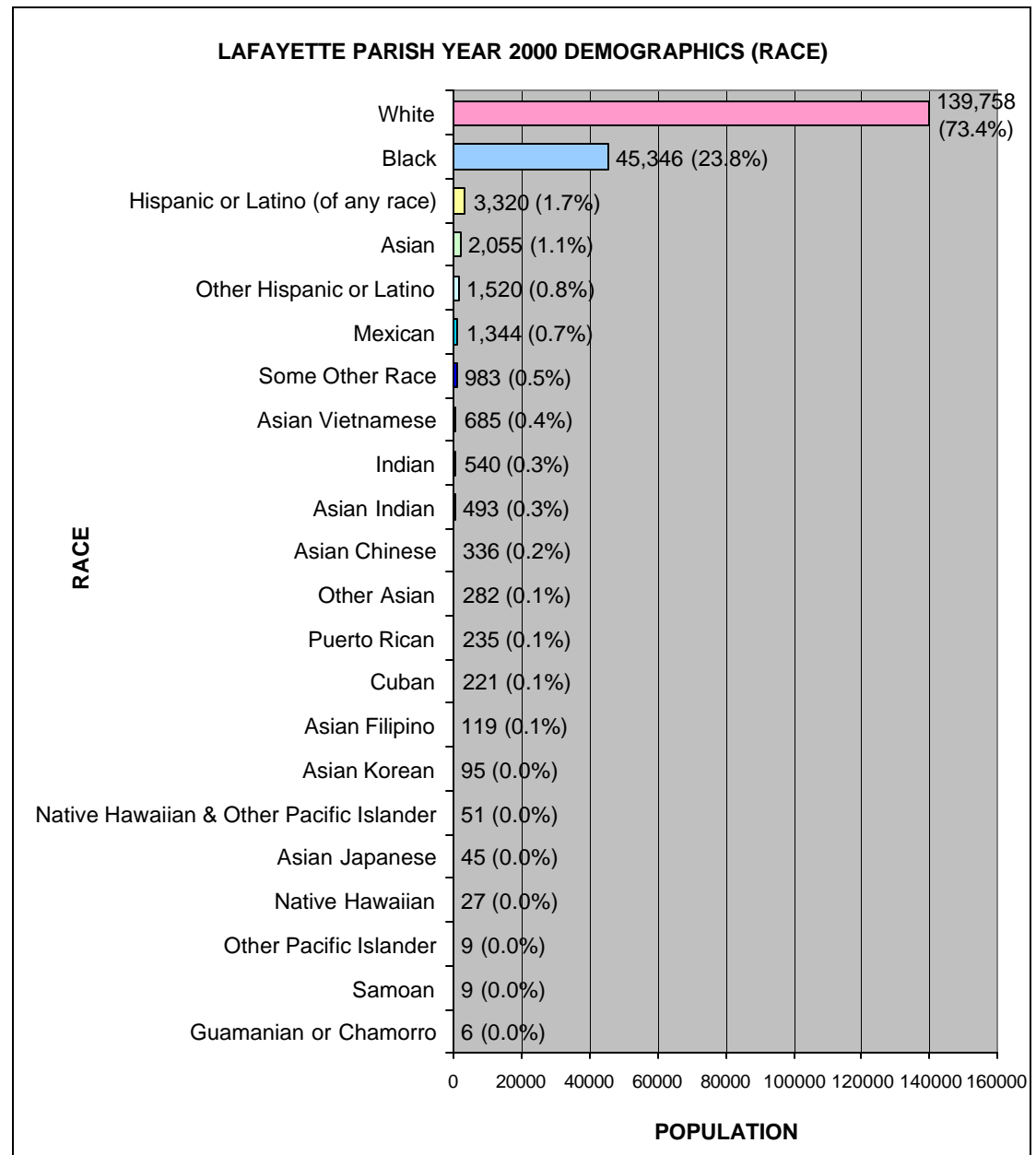


Source: Melissa Date – Demographics Lookups, Lafayette Parish; Retrieved June 2004, from <http://lookup.melissadata.com/lookups/demo2000.asp?ident=4030>

## LAFAYETTE PARISH YEAR 2000 DEMOGRAPHICS – RACE

LAFAYETTE PARISH YEAR 2000 DEMOGRAPHICS		
RACE		
One Race	188,733	99.10%
White	139,758	73.40%
Black	45,346	23.80%
Indian	540	0.30%
Asian	2,055	1.10%
Asian Indian	493	0.30%
Asian Chinese	336	0.20%
Asian Filipino	119	0.10%
Asian Japanese	45	0.00%
Asian Korean	95	0.00%
Asian Vietnamese	685	0.40%
Other Asian	282	0.10%
Native Hawaiian & Other Pacific Islander	51	0.00%
Native Hawaiian	27	0.00%
Guamanian or Chamorro	6	0.00%
Samoan	9	0.00%
Other Pacific Islander	9	0.00%
Some Other Race	983	0.50%
Two or more races	1,770	0.90%
HISPANIC OR LATINO AND RACE		
Hispanic or Latino (of any race)	3,320	1.70%
Mexican	1,344	0.70%
Puerto Rican	235	0.10%
Cuban	221	0.10%
Other Hispanic or Latino	1,520	0.80%

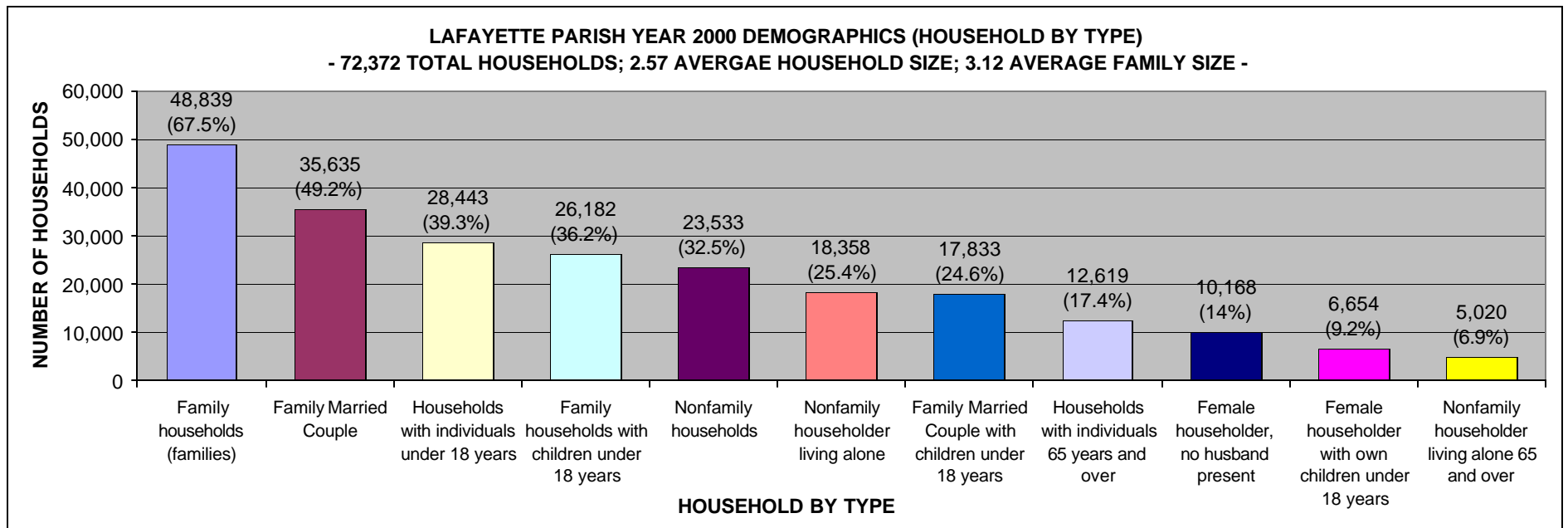
Source: Melissa Date – Demographics Lookups, Lafayette Parish;  
Retrieved June 2004, from  
<http://lookup.melissadata.com/lookups/demo2000.asp?ident=4030>



Source: Melissa Date – Demographics Lookups, Lafayette Parish; Retrieved June 2004, from  
<http://lookup.melissadata.com/lookups/demo2000.asp?ident=4030>

## LAFAYETTE PARISH YEAR 2000 DEMOGRAPHICS – HOUSEHOLD BY TYPE

LAFAYETTE PARISH YEAR 2000 DEMOGRAPHICS		
HOUSEHOLD BY TYPE		
Total Households	72,372	100.00%
Family households (families)	48,839	67.50%
Family households with children under 18 years	26,182	36.20%
Family Married Couple	35,635	49.20%
Family Married Couple with children under 18 years	17,833	24.60%
Female householder, no husband present	10,168	14.00%
Female householder with own children under 18 years	6,654	9.20%
Nonfamily households	23,533	32.50%
Nonfamily householder living alone	18,358	25.40%
Nonfamily householder living alone 65 and over	5,020	6.90%
Households with individuals under 18 years	28,443	39.30%
Households with individuals 65 years and over	12,619	17.40%
Average Household size	2.57	n/a
Average family size	3.12	n/a

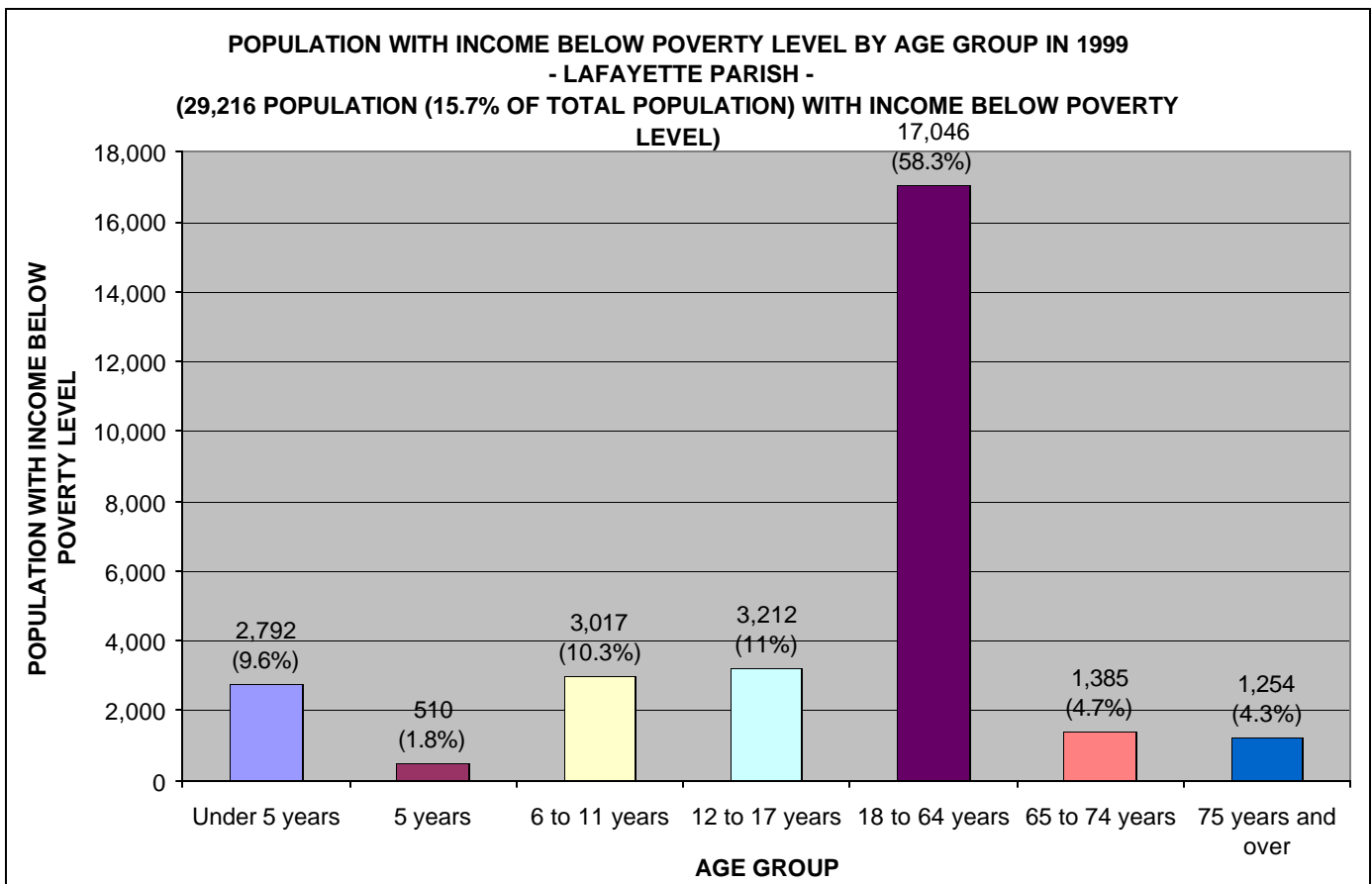


Source: Melissa Date – Demographics Lookups, Lafayette Parish; Retrieved June 2004, from <http://lookup.melissadata.com/lookups/demo2000.asp?ident=4030>

## 1999 POVERTY STATUS BY AGE IN LAFAYETTE PARISH

Lafayette Parish, Louisiana	Population with Income below Poverty Level	Percent
Income in 1999 below poverty level:	29,216	15.7%
Under 5 years	2,792	9.6%
5 years	510	1.7%
6 to 11 years	3,017	10.3%
12 to 17 years	3,212	11.0%
18 to 64 years	17,046	58.3%
65 to 74 years	1,385	4.7%
75 years and over	1,254	4.3%

Source: US Census Bureau, American Fact Finder, Detailed Tables, Data Set: Census 2000 Summary File 3 (SF 3) – Sample Data; Retrieved June 2004, from [http://factfinder.census.gov/servlet/DTTable?\\_bm=y&context=dt&ds\\_name=DEC\\_2000\\_SF3\\_U&CONTEXT=dt&mt\\_name=DEC\\_2000\\_SF3\\_U\\_P087&tree\\_id=403&-all\\_geo\\_types=N&-geo\\_id=05000US22001&-geo\\_id=05000US22039&-geo\\_id=05000US22045&-geo\\_id=05000US22053&-geo\\_id=05000US22055&-geo\\_id=05000US22097&-geo\\_id=05000US22099&-geo\\_id=05000US22101&-geo\\_id=05000US22113&-format=&-lang=en](http://factfinder.census.gov/servlet/DTTable?_bm=y&context=dt&ds_name=DEC_2000_SF3_U&CONTEXT=dt&mt_name=DEC_2000_SF3_U_P087&tree_id=403&-all_geo_types=N&-geo_id=05000US22001&-geo_id=05000US22039&-geo_id=05000US22045&-geo_id=05000US22053&-geo_id=05000US22055&-geo_id=05000US22097&-geo_id=05000US22099&-geo_id=05000US22101&-geo_id=05000US22113&-format=&-lang=en)

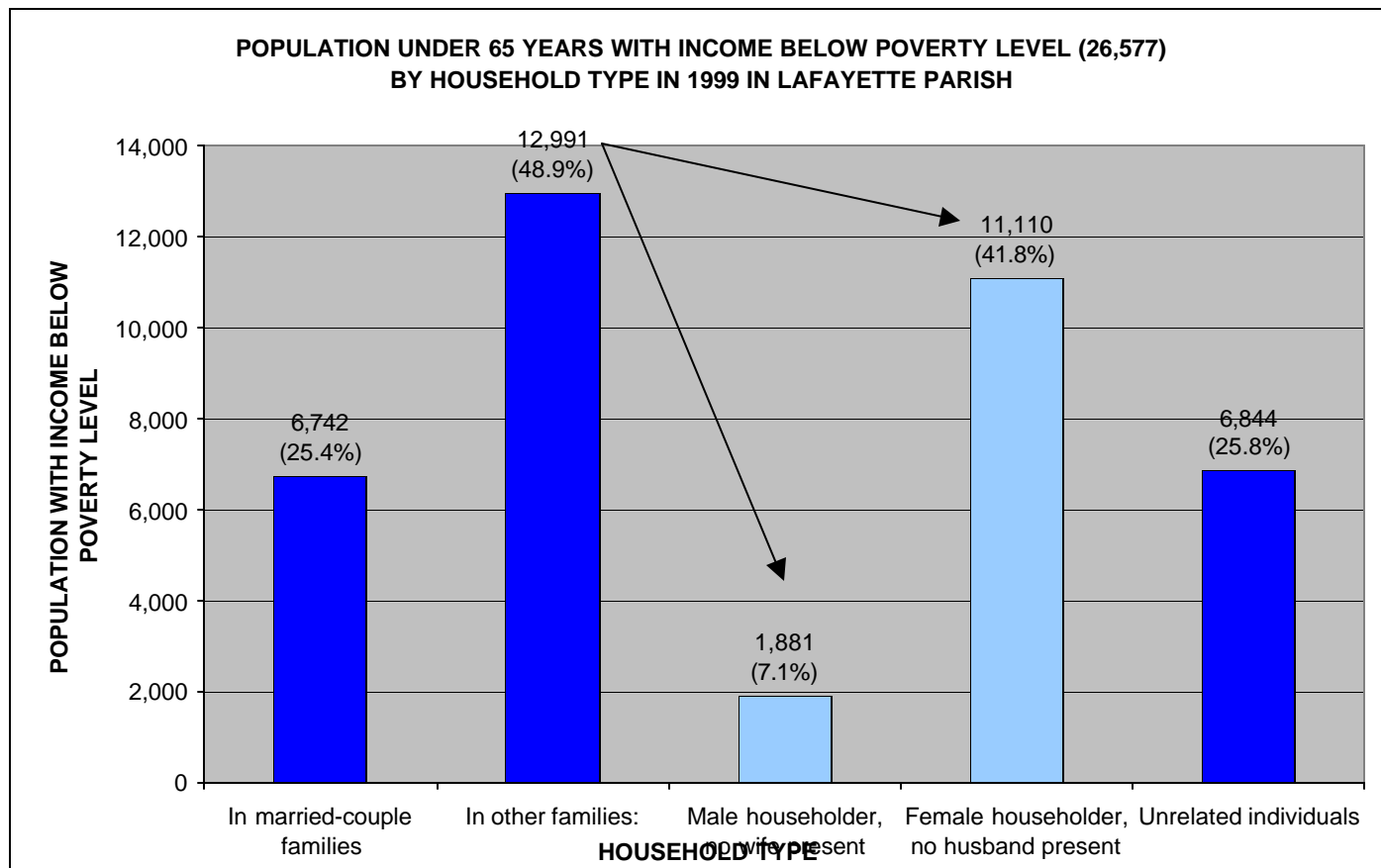


Source: US Census Bureau, American Fact Finder, Detailed Tables, Data Set: Census 2000 Summary File 3 (SF 3) – Sample Data; Retrieved June 2004, from [http://factfinder.census.gov/servlet/DTTable?\\_bm=y&context=dt&ds\\_name=DEC\\_2000\\_SF3\\_U&CONTEXT=dt&mt\\_name=DEC\\_2000\\_SF3\\_U\\_P087&tree\\_id=403&-all\\_geo\\_types=N&-geo\\_id=05000US22001&-geo\\_id=05000US22039&-geo\\_id=05000US22045&-geo\\_id=05000US22053&-geo\\_id=05000US22055&-geo\\_id=05000US22097&-geo\\_id=05000US22099&-geo\\_id=05000US22101&-geo\\_id=05000US22113&-format=&-lang=en](http://factfinder.census.gov/servlet/DTTable?_bm=y&context=dt&ds_name=DEC_2000_SF3_U&CONTEXT=dt&mt_name=DEC_2000_SF3_U_P087&tree_id=403&-all_geo_types=N&-geo_id=05000US22001&-geo_id=05000US22039&-geo_id=05000US22045&-geo_id=05000US22053&-geo_id=05000US22055&-geo_id=05000US22097&-geo_id=05000US22099&-geo_id=05000US22101&-geo_id=05000US22113&-format=&-lang=en)

**1999 POVERTY STATUS BY AGE AND HOUSEHOLD TYPE IN LAFAYETTE PARISH – UNDER 65 YEARS**

Lafayette Parish, Louisiana	Population with Income below Poverty Level	Percent
<b>Total:</b>	<b>185,805</b>	
<b>Income in 1999 below poverty level:</b>	<b>29,216</b>	<b>15.7%</b>
<b>Under 65 years:</b>	<b>26,577</b>	<b>91.0%</b>
In married-couple families	6,742	25.4%
In other families:	12,991	48.9%
Male householder, no wife present	1,881	7.1%
Female householder, no husband present	11,110	41.8%
Unrelated individuals	6,844	25.8%

Source: US Census Bureau, American Fact Finder, Detailed Tables, Data Set: Census 2000 Summary File 3 (SF 3) – Sample Data; Retrieved June 2004, from [http://factfinder.census.gov/servlet/DTTable?\\_bm=y&context=dt&ds\\_name=DEC\\_2000\\_SF3\\_U&-CONTEXT=dt&-mt\\_name=DEC\\_2000\\_SF3\\_U\\_P089&-tree\\_id=403&-redoLog=true&-all\\_geo\\_types=N&-geo\\_id=05000US22001&-geo\\_id=05000US22039&-geo\\_id=05000US22045&-geo\\_id=05000US22053&-geo\\_id=05000US22055&-geo\\_id=05000US22097&-geo\\_id=05000US22099&-geo\\_id=05000US22101&-geo\\_id=05000US22113&-format=&-lang=en](http://factfinder.census.gov/servlet/DTTable?_bm=y&context=dt&ds_name=DEC_2000_SF3_U&-CONTEXT=dt&-mt_name=DEC_2000_SF3_U_P089&-tree_id=403&-redoLog=true&-all_geo_types=N&-geo_id=05000US22001&-geo_id=05000US22039&-geo_id=05000US22045&-geo_id=05000US22053&-geo_id=05000US22055&-geo_id=05000US22097&-geo_id=05000US22099&-geo_id=05000US22101&-geo_id=05000US22113&-format=&-lang=en)

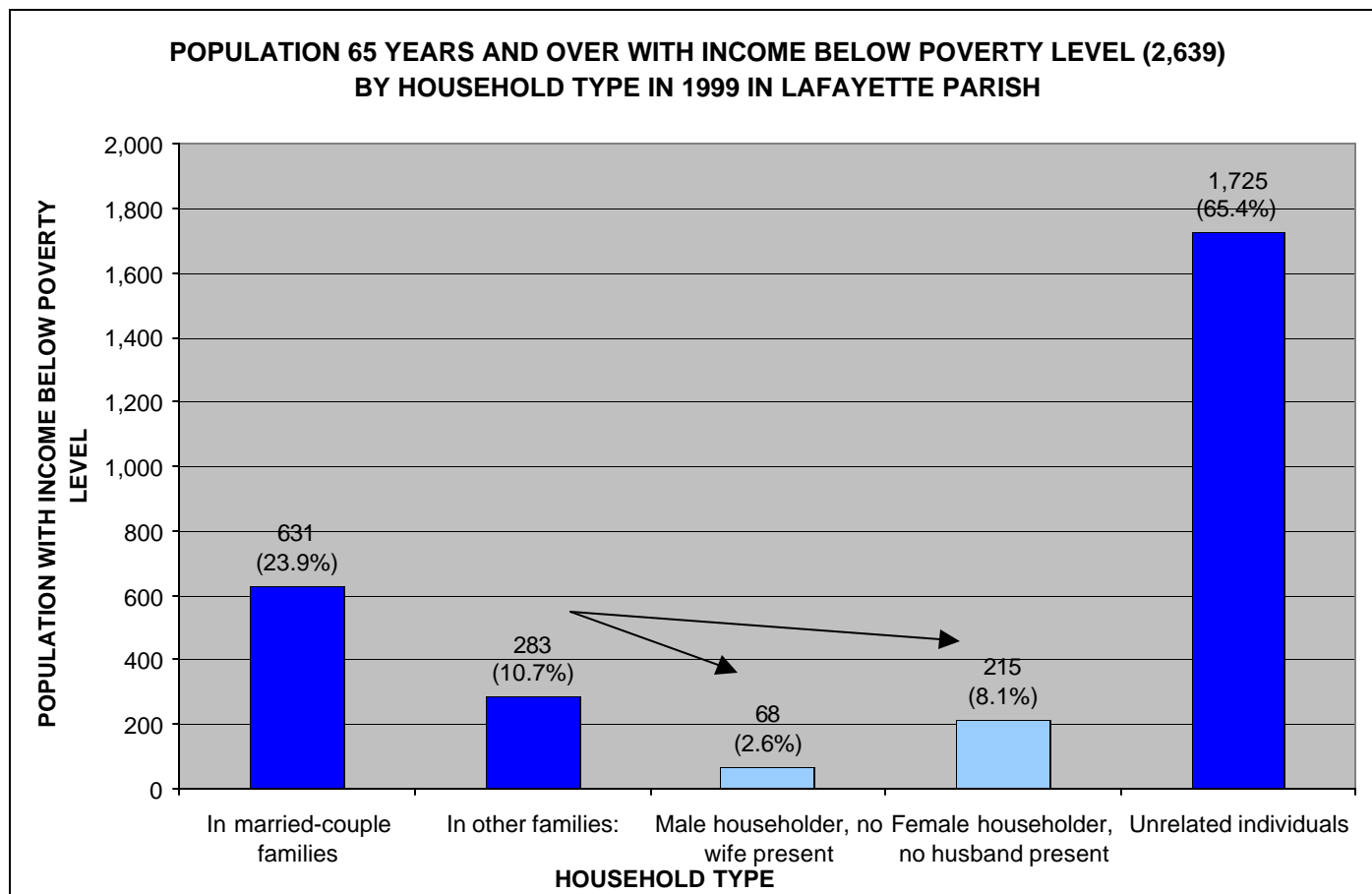


Source: US Census Bureau, American Fact Finder, Detailed Tables, Data Set: Census 2000 Summary File 3 (SF 3) – Sample Data; Retrieved June 2004, from [http://factfinder.census.gov/servlet/DTTable?\\_bm=y&context=dt&ds\\_name=DEC\\_2000\\_SF3\\_U&-CONTEXT=dt&-mt\\_name=DEC\\_2000\\_SF3\\_U\\_P089&-tree\\_id=403&-redoLog=true&-all\\_geo\\_types=N&-geo\\_id=05000US22001&-geo\\_id=05000US22039&-geo\\_id=05000US22045&-geo\\_id=05000US22053&-geo\\_id=05000US22055&-geo\\_id=05000US22097&-geo\\_id=05000US22099&-geo\\_id=05000US22101&-geo\\_id=05000US22113&-format=&-lang=en](http://factfinder.census.gov/servlet/DTTable?_bm=y&context=dt&ds_name=DEC_2000_SF3_U&-CONTEXT=dt&-mt_name=DEC_2000_SF3_U_P089&-tree_id=403&-redoLog=true&-all_geo_types=N&-geo_id=05000US22001&-geo_id=05000US22039&-geo_id=05000US22045&-geo_id=05000US22053&-geo_id=05000US22055&-geo_id=05000US22097&-geo_id=05000US22099&-geo_id=05000US22101&-geo_id=05000US22113&-format=&-lang=en)

**1999 POVERTY STATUS BY AGE AND HOUSEHOLD TYPE IN LAFAYETTE PARISH - 65 YEARS AND OVER**

Lafayette Parish, Louisiana	Population with Income below Poverty Level	Percent
<b>Total:</b>	<b>185,805</b>	
<b>Income in 1999 below poverty level:</b>	<b>29,216</b>	<b>15.7%</b>
<b>65 years and over:</b>	<b>2,639</b>	<b>9.0%</b>
In married-couple families	631	23.9%
In other families:	283	10.7%
Male householder, no wife present	68	2.6%
Female householder, no husband present	215	8.1%
Unrelated individuals	1,725	65.4%

Source: US Census Bureau, American Fact Finder, Detailed Tables, Data Set: Census 2000 Summary File 3 (SF 3) – Sample Data; Retrieved June 2004, from [http://factfinder.census.gov/servlet/DTable?\\_bm=y&-context=dt&-ds\\_name=DEC\\_2000\\_SF3\\_U&-CONTEXT=dt&-mt\\_name=DEC\\_2000\\_SF3\\_U\\_P089&-tree\\_id=403&-redoLog=true&-all\\_geo\\_types=N&-geo\\_id=05000US22001&-geo\\_id=05000US22039&-geo\\_id=05000US22045&-geo\\_id=05000US22053&-geo\\_id=05000US22055&-geo\\_id=05000US22097&-geo\\_id=05000US22099&-geo\\_id=05000US22101&-geo\\_id=05000US22113&-format=&-lang=en](http://factfinder.census.gov/servlet/DTable?_bm=y&-context=dt&-ds_name=DEC_2000_SF3_U&-CONTEXT=dt&-mt_name=DEC_2000_SF3_U_P089&-tree_id=403&-redoLog=true&-all_geo_types=N&-geo_id=05000US22001&-geo_id=05000US22039&-geo_id=05000US22045&-geo_id=05000US22053&-geo_id=05000US22055&-geo_id=05000US22097&-geo_id=05000US22099&-geo_id=05000US22101&-geo_id=05000US22113&-format=&-lang=en)



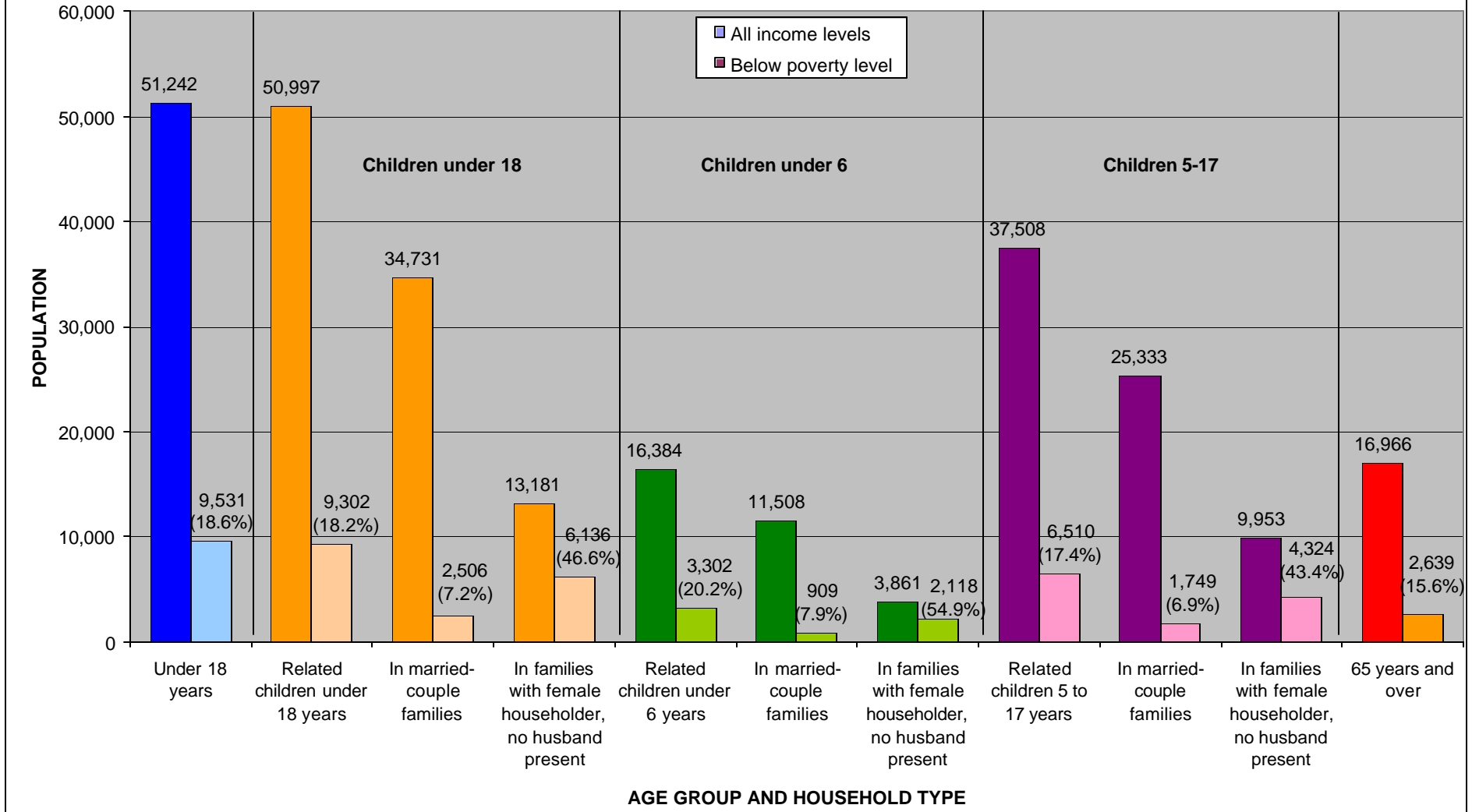
Source: US Census Bureau, American Fact Finder, Detailed Tables, Data Set: Census 2000 Summary File 3 (SF 3) – Sample Data; Retrieved June 2004, from [http://factfinder.census.gov/servlet/DTable?\\_bm=y&-context=dt&-ds\\_name=DEC\\_2000\\_SF3\\_U&-CONTEXT=dt&-mt\\_name=DEC\\_2000\\_SF3\\_U\\_P089&-tree\\_id=403&-redoLog=true&-all\\_geo\\_types=N&-geo\\_id=05000US22001&-geo\\_id=05000US22039&-geo\\_id=05000US22045&-geo\\_id=05000US22053&-geo\\_id=05000US22055&-geo\\_id=05000US22097&-geo\\_id=05000US22099&-geo\\_id=05000US22101&-geo\\_id=05000US22113&-format=&-lang=en](http://factfinder.census.gov/servlet/DTable?_bm=y&-context=dt&-ds_name=DEC_2000_SF3_U&-CONTEXT=dt&-mt_name=DEC_2000_SF3_U_P089&-tree_id=403&-redoLog=true&-all_geo_types=N&-geo_id=05000US22001&-geo_id=05000US22039&-geo_id=05000US22045&-geo_id=05000US22053&-geo_id=05000US22055&-geo_id=05000US22097&-geo_id=05000US22099&-geo_id=05000US22101&-geo_id=05000US22113&-format=&-lang=en)

## 1999 POVERTY STATUS OF INDIVIDUALS IN LAFAYETTE PARISH – AGE GROUPS

POVERTY STATUS IN 1999 OF INDIVIDUALS IN LAFAYETTE PARISH	All Income Levels	Below Poverty Level	Percent below Poverty Level
<b>All individuals for whom poverty status is determined</b>	<b>185,805</b>	<b>29,216</b>	<b>15.7</b>
<b>Under 18 years</b>	<b>51,242</b>	<b>9,531</b>	<b>18.6</b>
Related children under 18 years	50,997	9,302	18.2
In married-couple families	34,731	2,506	7.2
In families with female householder, no husband present	13,181	6,136	46.6
Related children under 6 years	16,384	3,302	20.2
In married-couple families	11,508	909	7.9
In families with female householder, no husband present	3,861	2,118	54.9
Related children 5 to 17 years	37,508	6,510	17.4
In married-couple families	25,333	1,749	6.9
In families with female householder, no husband present	9,953	4,324	43.4
<b>65 years and over</b>	<b>16,966</b>	<b>2,639</b>	<b>15.6</b>

Source: US Census Bureau, American Fact Finder, Quick Tables, QT-P33, Data Set: Census 2000 Summary File (SF 3) – Sample Data, Geographic Area: Lafayette Parish, Louisiana; Retrieved June 2004, from [http://factfinder.census.gov/servlet/QTTable?\\_bm=y&-state=qt&-context=qt&-qr\\_name=DEC\\_2000\\_SF3\\_U\\_QTP34&-ds\\_name=DEC\\_2000\\_SF3\\_U&-tree\\_id=403&-all\\_geo\\_types=N&-geo\\_id=05000US22001&-geo\\_id=05000US22039&-geo\\_id=05000US22045&-geo\\_id=05000US22055&-geo\\_id=05000US22097&-geo\\_id=05000US22099&-geo\\_id=05000US22101&-geo\\_id=05000US22113&-format=&-lang=en](http://factfinder.census.gov/servlet/QTTable?_bm=y&-state=qt&-context=qt&-qr_name=DEC_2000_SF3_U_QTP34&-ds_name=DEC_2000_SF3_U&-tree_id=403&-all_geo_types=N&-geo_id=05000US22001&-geo_id=05000US22039&-geo_id=05000US22045&-geo_id=05000US22055&-geo_id=05000US22097&-geo_id=05000US22099&-geo_id=05000US22101&-geo_id=05000US22113&-format=&-lang=en)

**POVERTY STATUS IN 1999 OF INDIVIDUALS IN LAFAYETTE PARISH  
- 185,805 ALL INCOME LEVELS POPULATION; 29,216 BELOW POVERTY LEVEL POPULATION -**



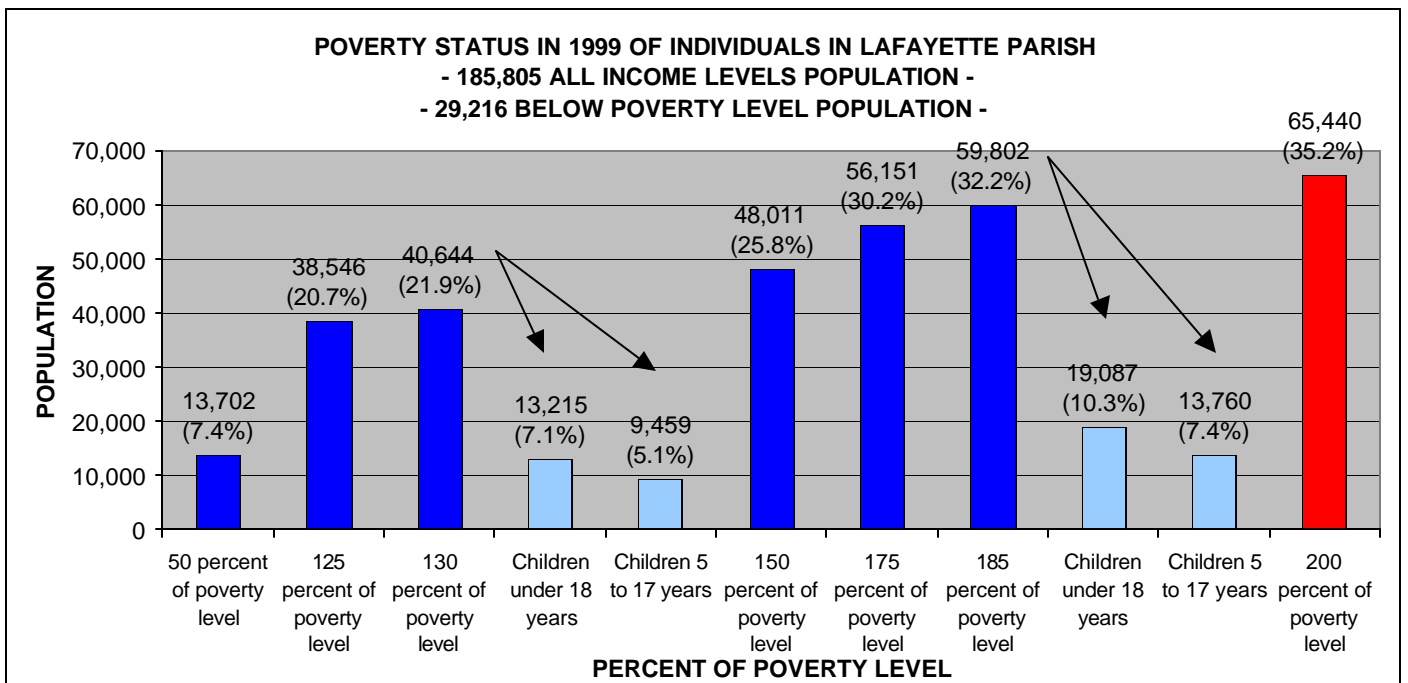
Source: US Census Bureau, American Fact Finder, Quick Tables, QT-P33, Data Set: Census 2000 Summary File (SF 3) – Sample Data, Geographic Area: Lafayette Parish, Louisiana; Retrieved June 2004, from [http://factfinder.census.gov/servlet/QTTable?\\_bm=y&-state=qt&-context=qt&-qr\\_name=DEC\\_2000\\_SF3\\_U\\_QTP34&-ds\\_name=DEC\\_2000\\_SF3\\_U&-tree\\_id=403&-all\\_geo\\_types=N&-geo\\_id=05000US22001&-geo\\_id=05000US22039&-geo\\_id=05000US22045&-geo\\_id=05000US22055&-geo\\_id=05000US22097&-geo\\_id=05000US22099&-geo\\_id=05000US22101&-geo\\_id=05000US22113&-format=&-lang=en](http://factfinder.census.gov/servlet/QTTable?_bm=y&-state=qt&-context=qt&-qr_name=DEC_2000_SF3_U_QTP34&-ds_name=DEC_2000_SF3_U&-tree_id=403&-all_geo_types=N&-geo_id=05000US22001&-geo_id=05000US22039&-geo_id=05000US22045&-geo_id=05000US22055&-geo_id=05000US22097&-geo_id=05000US22099&-geo_id=05000US22101&-geo_id=05000US22113&-format=&-lang=en)

**1999 POVERTY STATUS OF INDIVIDUALS IN LAFAYETTE PARISH – PERCENT OF POVERTY LEVEL**

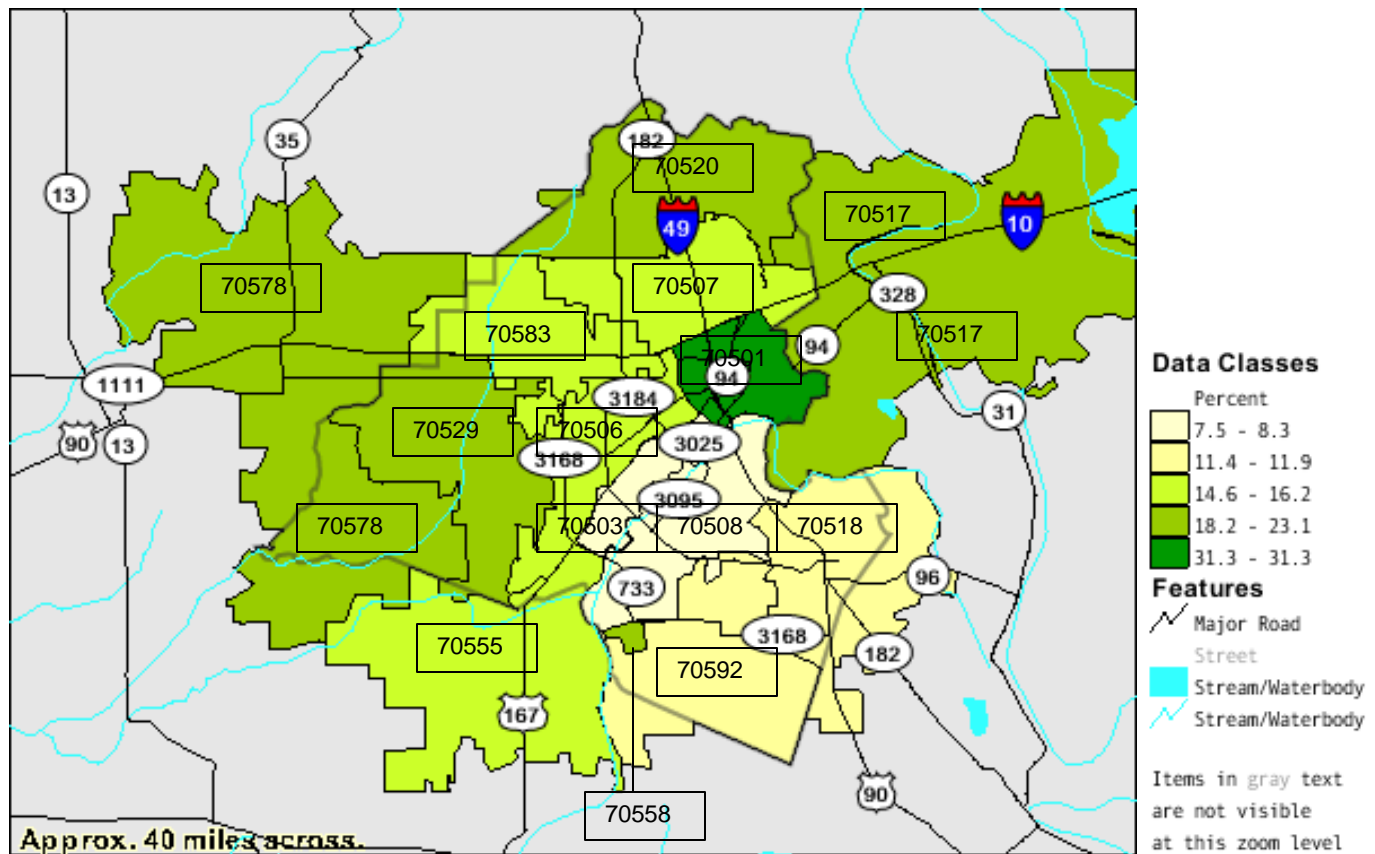
<b>POVERTY STATUS IN 1999 OF INDIVIDUALS IN LAFAYETTE PARISH</b>	<b>All Income Levels</b>	<b>Percent of Total Population</b>
<b>Total Population</b>	<b>185,805</b>	
<b>All individuals below:</b>		
50 percent of poverty level	13,702	7.4%
125 percent of poverty level	38,546	20.7%
130 percent of poverty level	40,644	21.9%
<i>Children under 18 years</i>	13,215	7.1%
<i>Children 5 to 17 years</i>	9,459	5.1%
150 percent of poverty level	48,011	25.8%
175 percent of poverty level	56,151	30.2%
185 percent of poverty level	59,802	32.2%
<i>Children under 18 years</i>	19,087	10.3%
<i>Children 5 to 17 years</i>	13,760	7.4%
200 percent of poverty level	65,440	35.2%

(X) Not applicable.

Source: US Census Bureau, American Fact Finder, Quick Tables, QT-P33, Data Set: Census 2000 Summary File (SF 3) – Sample Data, Geographic Area: Lafayette Parish, Louisiana; Retrieved June 2004, from [http://factfinder.census.gov/servlet/QTTable?\\_bm=y&-state=qt&-context=qt&-gr\\_name=DEC\\_2000\\_SF3\\_U\\_QTP34&-ds\\_name=DEC\\_2000\\_SF3\\_U&-tree\\_id=403&-all\\_geo\\_types=N&-geo\\_id=05000US22001&-geo\\_id=05000US22039&-geo\\_id=05000US22045&-geo\\_id=05000US22055&-geo\\_id=05000US22097&-geo\\_id=05000US22099&-geo\\_id=05000US22101&-geo\\_id=05000US22113&-format=&-lang=en](http://factfinder.census.gov/servlet/QTTable?_bm=y&-state=qt&-context=qt&-gr_name=DEC_2000_SF3_U_QTP34&-ds_name=DEC_2000_SF3_U&-tree_id=403&-all_geo_types=N&-geo_id=05000US22001&-geo_id=05000US22039&-geo_id=05000US22045&-geo_id=05000US22055&-geo_id=05000US22097&-geo_id=05000US22099&-geo_id=05000US22101&-geo_id=05000US22113&-format=&-lang=en)

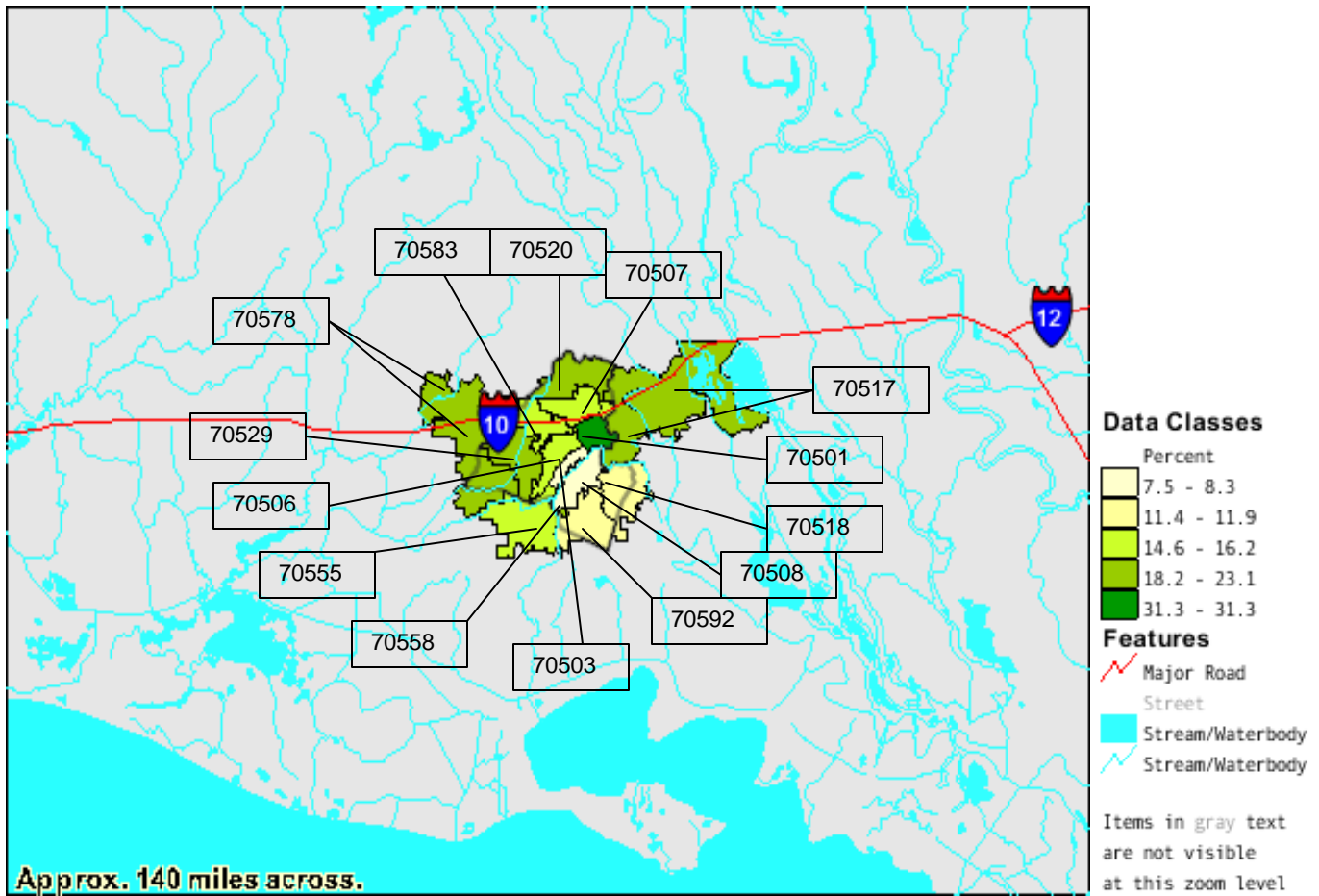


**PERCENT OF PERSONS BELOW THE POVERTY LEVEL IN 1999 BY 5-DIGIT ZIP CODE TABULATION AREA IN LAFAYETTE PARISH**



Source: Census 2000, American Fact Finder, Thematic Maps, Summary File 3 (SF 3), Sample Data; Retrieved July 2004, from [http://factfinder.census.gov/servlet/ThematicMapFramesetServlet?\\_bm=y&-tree\\_id=403&-MapEvent=displayBy&\\_%20tm\\_config=|b=50||=en|t=403|zf=0.0|ms=thm\\_def|dw=0.2020972103849424|dh=0.13193695645157985|dt=%20ov.census.aff.domain.m.ap.EnglishMapExtent|if=gif|cx=92.005|cy=30.0965|zl=5|pz=5|bo=|bl=|ft=350:349:335:389:388:332:331|fl=381:403:204:380:369:379:368|g=05000US22045|ds=DEC\\_2000\\_SF3\\_U|sb=50|tud=false|db=860|mn=0|mx=28.6|cc=1|cm=1|cn=5|cb=|um=Percent|pr=1|th=DEC\\_2000\\_SF3\\_U\\_M00075&-context=tm&-errMsg=&-states=%20&-all\\_geo\\_types=N&-dBy=860&-redoLog=false&-zoomLevel=&-street=&-tm\\_name=DEC\\_2000\\_SF3\\_U\\_M00075&-tm\\_config=|b=50||=en|t=403|zf=0.0|ms=thm\\_def|dw=0.6736573679497436|dh=0.4397898548385574|dt=gov.census.aff.domain.map.EnglishMapExtent|if=gif|cx=92.0952465|cy=30.2071235|zl=6|pz=6|bo=|bl=|ft=350:349:335:389:388:332:331|fl=381:403:204:380:369:379:368|g=05000US22055|ds=DEC\\_2000\\_SF3\\_U|sb=50|tud=false|db=060|mn=6.9|mx=36.7|cc=1|cm=1|cn=5|cb=|um=Percent|pr=1|th=DEC\\_2000\\_SF3\\_U\\_M00075&-PANEL\\_ID=tm\\_result&-pageY=&-lang=en&-pageX=&-geo\\_id=05000US22055&-CONTEXT=tm&-mapY=&-city=&-mapX=&-latitude=&-pan=&-format=&-ds\\_name=DEC\\_2000\\_SF3\\_U&-zip=70592&-longitude=&-changeMap=ZoomIn](http://factfinder.census.gov/servlet/ThematicMapFramesetServlet?_bm=y&-tree_id=403&-MapEvent=displayBy&_%20tm_config=|b=50||=en|t=403|zf=0.0|ms=thm_def|dw=0.2020972103849424|dh=0.13193695645157985|dt=%20ov.census.aff.domain.m.ap.EnglishMapExtent|if=gif|cx=92.005|cy=30.0965|zl=5|pz=5|bo=|bl=|ft=350:349:335:389:388:332:331|fl=381:403:204:380:369:379:368|g=05000US22045|ds=DEC_2000_SF3_U|sb=50|tud=false|db=860|mn=0|mx=28.6|cc=1|cm=1|cn=5|cb=|um=Percent|pr=1|th=DEC_2000_SF3_U_M00075&-context=tm&-errMsg=&-states=%20&-all_geo_types=N&-dBy=860&-redoLog=false&-zoomLevel=&-street=&-tm_name=DEC_2000_SF3_U_M00075&-tm_config=|b=50||=en|t=403|zf=0.0|ms=thm_def|dw=0.6736573679497436|dh=0.4397898548385574|dt=gov.census.aff.domain.map.EnglishMapExtent|if=gif|cx=92.0952465|cy=30.2071235|zl=6|pz=6|bo=|bl=|ft=350:349:335:389:388:332:331|fl=381:403:204:380:369:379:368|g=05000US22055|ds=DEC_2000_SF3_U|sb=50|tud=false|db=060|mn=6.9|mx=36.7|cc=1|cm=1|cn=5|cb=|um=Percent|pr=1|th=DEC_2000_SF3_U_M00075&-PANEL_ID=tm_result&-pageY=&-lang=en&-pageX=&-geo_id=05000US22055&-CONTEXT=tm&-mapY=&-city=&-mapX=&-latitude=&-pan=&-format=&-ds_name=DEC_2000_SF3_U&-zip=70592&-longitude=&-changeMap=ZoomIn)

**PERCENT OF PERSONS BELOW THE POVERTY LEVEL IN 1999 BY 5-DIGIT ZIP CODE TABULATION AREA IN LAFAYETTE PARISH - ZOOM**



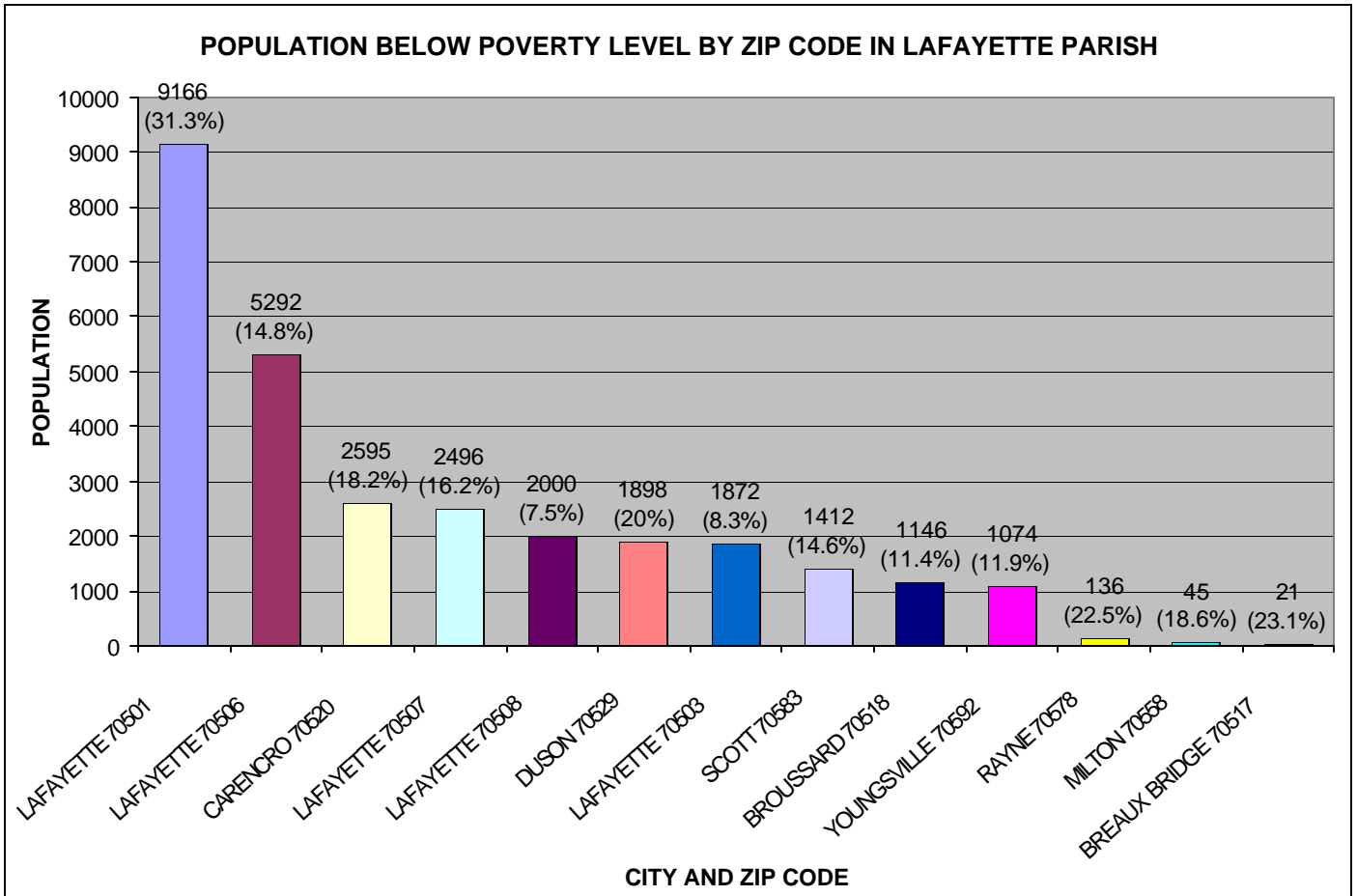
Source: Census 2000, American Fact Finder, Thematic Maps, Summary File 3 (SF 3), Sample Data; Retrieved July 2004, from [http://factfinder.census.gov/servlet/ThematicMapFramesetServlet?\\_bm=y&-tree\\_id=403&-MapEvent=zoom&-%20tm\\_config=|b=50||=en|t=403|zf=0.0|ms=thm\\_def|dw=0.2020972103849424|dh=0.13193695645157985|dt=%20ov.census.aff.domain.map.EnglishMapExtent|if=gif|cx=92.005|cy=30.0965|zl=5|pz=5|bo=|bl=|ft=350:349:335:389:388:332:331|fl=381:403:204:380:369:379:368|g=05000US22045|ds=DEC\\_2000\\_SF3\\_U|sb=50|tud=false|db=860|mn=0|mx=28.6|cc=1|cm=1|cn=5|cb=|um=Percent|pr=1|th=DEC\\_2000\\_SF3\\_U\\_M00075&-context=tm&-errMsg=&-states=%20&-all\\_geo\\_types=N&-dBy=860&-redoLog=false&-zoomLevel=7&-street=&-tm\\_name=DEC\\_2000\\_SF3\\_U\\_M00075&-tm\\_config=|b=50||=en|t=403|zf=0.0|ms=thm\\_def|dw=0.6736573679497436|dh=0.4397898548385574|dt=gov.census.aff.domain.map.EnglishMapExtent|if=gif|cx=92.0952465|cy=30.2071235|zl=6|pz=6|bo=|bl=|ft=350:349:335:389:388:332:331|fl=381:403:204:380:369:379:368|g=05000US22055|ds=DEC\\_2000\\_SF3\\_U|sb=50|tud=false|db=860|mn=7.5|mx=31.3|cc=1|cm=1|cn=5|cb=|um=Percent|pr=1|th=DEC\\_2000\\_SF3\\_U\\_M00075&-PANEL\\_ID=tm\\_result&-pageY=&-lang=en&-pageX=&-geo\\_id=05000US22055&-CONTEXT=tm&-mapY=&-city=&-mapX=&-latitude=&-pan=&-format=&-ds\\_name=DEC\\_2000\\_SF3\\_U&-zip=70592&-longitude=&-changeMap=ZoomIn](http://factfinder.census.gov/servlet/ThematicMapFramesetServlet?_bm=y&-tree_id=403&-MapEvent=zoom&-%20tm_config=|b=50||=en|t=403|zf=0.0|ms=thm_def|dw=0.2020972103849424|dh=0.13193695645157985|dt=%20ov.census.aff.domain.map.EnglishMapExtent|if=gif|cx=92.005|cy=30.0965|zl=5|pz=5|bo=|bl=|ft=350:349:335:389:388:332:331|fl=381:403:204:380:369:379:368|g=05000US22045|ds=DEC_2000_SF3_U|sb=50|tud=false|db=860|mn=0|mx=28.6|cc=1|cm=1|cn=5|cb=|um=Percent|pr=1|th=DEC_2000_SF3_U_M00075&-context=tm&-errMsg=&-states=%20&-all_geo_types=N&-dBy=860&-redoLog=false&-zoomLevel=7&-street=&-tm_name=DEC_2000_SF3_U_M00075&-tm_config=|b=50||=en|t=403|zf=0.0|ms=thm_def|dw=0.6736573679497436|dh=0.4397898548385574|dt=gov.census.aff.domain.map.EnglishMapExtent|if=gif|cx=92.0952465|cy=30.2071235|zl=6|pz=6|bo=|bl=|ft=350:349:335:389:388:332:331|fl=381:403:204:380:369:379:368|g=05000US22055|ds=DEC_2000_SF3_U|sb=50|tud=false|db=860|mn=7.5|mx=31.3|cc=1|cm=1|cn=5|cb=|um=Percent|pr=1|th=DEC_2000_SF3_U_M00075&-PANEL_ID=tm_result&-pageY=&-lang=en&-pageX=&-geo_id=05000US22055&-CONTEXT=tm&-mapY=&-city=&-mapX=&-latitude=&-pan=&-format=&-ds_name=DEC_2000_SF3_U&-zip=70592&-longitude=&-changeMap=ZoomIn)

**PERCENT OF PERSONS BELOW THE POVERTY LEVEL IN 1999 BY 5-DIGIT ZIP CODE TABULATION AREA IN LAFAYETTE PARISH - LEGEND**

Zip Code	City	Population Base	Percent of ZIP Code Addresses In Parish	Adjusted Population Base	Percent below Poverty Level	Population in Parish below Poverty Level
70501	LAFAYETTE	29283	100.00%	29283	31.3	9166
70502	LAFAYETTE	N/A	100.00%	N/A	N/A	N/A
70503	LAFAYETTE	22552	100.00%	22552	8.3	1872
70504	LAFAYETTE	N/A	100.00%	N/A	N/A	N/A
70505	LAFAYETTE	N/A	100.00%	N/A	N/A	N/A
70506	LAFAYETTE	35760	100.00%	35760	14.8	5292
70507	LAFAYETTE	15407	100.00%	15407	16.2	2496
70508	LAFAYETTE	26663	100.00%	26663	7.5	2000
70509	LAFAYETTE	N/A	100.00%	N/A	N/A	N/A
70517	BREAUX BRIDGE	22257	0.40%	89	23.1	21
70518	BROUSSARD	11246	89.40%	10054	11.4	1146
70520	CARENCRO	14474	98.50%	14257	18.2	2595
70529	DUSON	9540	99.50%	9492	20	1898
70555	MAURICE	7136	3.30%	235	15.5	N/A
70558	MILTON	242	100.00%	242	18.6	45
70578	RAYNE	14754	4.10%	605	22.5	136
70583	SCOTT	10303	93.90%	9675	14.6	1412
70592	YOUNGSVILLE	11101	81.30%	9025	11.9	1074
70596	LAFAYETTE	N/A	100.00%	N/A	N/A	N/A
70598	LAFAYETTE	N/A	100.00%	N/A	N/A	N/A
<b>EST. TOTAL</b>		<b>230718</b>		<b>183339</b>		<b>29153</b>

- Source: Melissa Data, ZIP Codes by County; Retrieved June 2004, from <http://lookup.melissadata.com/Lookups/CountyZip.asp?statername=Louisiana&county=LA22001ACADIA&B1=Submit>
- Source: Census 2000, American Fact Finder, Thematic Maps, Summary File 3 (SF 3), Sample Data; Retrieved July 2004, from [http://factfinder.census.gov/servlet/ThematicMapFramesetServlet?\\_bm=y&-tree\\_id=403&-MapEvent=displayBy&-%20tm\\_config=|b=50||=en|t=403|zf=0.0|ms=thm\\_def|dw=0.2020972103849424|dh=0.13193695645157985|dt=%20ov.census.aff.doma in.map.EnglishMapExtent|if=gif|cx=92.005|cy=30.0965|zl=5|pz=5|bo=|bl=|ft=350:349:335:389:388:332:331|fl=381:403:204:380:369:379:368|g=05000US22045|ds=DEC\\_2000\\_SF3\\_U|sb=50|tud=false|db=860|mn=0|mx=28.6|cc=1|cm=1|cn=5|cb=|um=Percent|pr=1|th=DEC\\_2000\\_SF3\\_U\\_M00075&-context=tm&-errMsg=&-states=%20&-all\\_geo\\_types=N&-dBy=860&-redLog=false&-zoomLevel=&-street=&-tm\\_name=DEC\\_2000\\_SF3\\_U\\_M00075&-tm\\_config=|b=50||=en|t=403|zf=0.0|ms=thm\\_def|dw=0.6736573679497436|dh=0.4397898548385574|dt=gov.census.aff.domain.map.EnglishMapExtent|if=gif|cx=92.0952465|cy=30.2071235|zl=6|pz=6|bo=|bl=|ft=350:349:335:389:388:332:331|fl=381:403:204:380:369:379:368|g=05000US22055|ds=DEC\\_2000\\_SF3\\_U|sb=50|tud=false|db=060|mn=6.9|mx=36.7|cc=1|cm=1|cn=5|cb=|um=Percent|pr=1|th=DEC\\_2000\\_SF3\\_U\\_M00075&-PANEL\\_ID=tm\\_result&-pageY=&-lang=en&-pageX=&-geo\\_id=05000US22055&-CONTEXT=tm&-mapY=&-city=&-mapX=&-latitude=&-pan=&-format=&-ds\\_name=DEC\\_2000\\_SF3\\_U&-zip=70592&-longitude=&-changeMap=ZoomIn](http://factfinder.census.gov/servlet/ThematicMapFramesetServlet?_bm=y&-tree_id=403&-MapEvent=displayBy&-%20tm_config=|b=50||=en|t=403|zf=0.0|ms=thm_def|dw=0.2020972103849424|dh=0.13193695645157985|dt=%20ov.census.aff.doma in.map.EnglishMapExtent|if=gif|cx=92.005|cy=30.0965|zl=5|pz=5|bo=|bl=|ft=350:349:335:389:388:332:331|fl=381:403:204:380:369:379:368|g=05000US22045|ds=DEC_2000_SF3_U|sb=50|tud=false|db=860|mn=0|mx=28.6|cc=1|cm=1|cn=5|cb=|um=Percent|pr=1|th=DEC_2000_SF3_U_M00075&-context=tm&-errMsg=&-states=%20&-all_geo_types=N&-dBy=860&-redLog=false&-zoomLevel=&-street=&-tm_name=DEC_2000_SF3_U_M00075&-tm_config=|b=50||=en|t=403|zf=0.0|ms=thm_def|dw=0.6736573679497436|dh=0.4397898548385574|dt=gov.census.aff.domain.map.EnglishMapExtent|if=gif|cx=92.0952465|cy=30.2071235|zl=6|pz=6|bo=|bl=|ft=350:349:335:389:388:332:331|fl=381:403:204:380:369:379:368|g=05000US22055|ds=DEC_2000_SF3_U|sb=50|tud=false|db=060|mn=6.9|mx=36.7|cc=1|cm=1|cn=5|cb=|um=Percent|pr=1|th=DEC_2000_SF3_U_M00075&-PANEL_ID=tm_result&-pageY=&-lang=en&-pageX=&-geo_id=05000US22055&-CONTEXT=tm&-mapY=&-city=&-mapX=&-latitude=&-pan=&-format=&-ds_name=DEC_2000_SF3_U&-zip=70592&-longitude=&-changeMap=ZoomIn)

**POPULATION BELOW POVERTY LEVEL BY ZIP CODE IN LAFAYETTE PARISH**



- Source: Melissa Data, ZIP Codes by County; Retrieved June 2004, from <http://lookup.melissadata.com/Lookups/CountyZip.asp?statername=Louisiana&county=LA22001ACADIA&B1=Submit>
- Source: Census 2000, American Fact Finder, Thematic Maps, Summary File 3 (SF 3), Sample Data; Retrieved July 2004, from [http://factfinder.census.gov/servlet/ThematicMapFramesetServlet?\\_bm=y&-tree\\_id=403&-\\_MapEvent=displayBy%20tm\\_config=|b=50||=en|t=403|zf=0.0|ms=thm\\_def|dw=0.2020972103849424|dh=0.13193695645157985|dt=%20ov.census.aff.doma.in.map.EnglishMapExtent|if=gif|cx=-92.005|cy=30.0965|zl=5|pz=5|bo=|bl=|ft=350:349:335:389:388:332:331|fl=381:403:204:380:369:379:368|g=05000US22045|ds=DEC\\_2000\\_SF3\\_U|sb=50|tud=false|db=860|mn=0|mx=28.6|cc=1|cm=1|cn=5|cb=|um=Percent|pr=1|th=DEC\\_2000\\_SF3\\_U\\_M00075&-context=tm&-errMsg=&-states=%20&-all\\_geo\\_types=N&-\\_dBy=860&-redoLog=false&-\\_zoomLevel=&-street=&-tm\\_name=DEC\\_2000\\_SF3\\_U\\_M00075&-tm\\_config=|b=50||=en|t=403|zf=0.0|ms=thm\\_def|dw=0.6736573679497436|dh=0.4397898548385574|dt=gov.census.aff.domain.map.EnglishMapExtent|if=gif|cx=-92.0952465|cy=30.2071235|zl=6|pz=6|bo=|bl=|ft=350:349:335:389:388:332:331|fl=381:403:204:380:369:379:368|g=05000US22055|ds=DEC\\_2000\\_SF3\\_U|sb=50|tud=false|db=060|mn=6.9|mx=36.7|cc=1|cm=1|cn=5|cb=|um=Percent|pr=1|th=DEC\\_2000\\_SF3\\_U\\_M00075&-PANEL\\_ID=tm\\_result&-\\_pageY=&-\\_lang=en&-\\_pageX=&-geo\\_id=05000US22055&-CONTEXT=tm&-\\_mapY=&-\\_city=&-\\_mapX=&-\\_latitude=&-\\_pan=&-format=&-ds\\_name=DEC\\_2000\\_SF3\\_U&-zip=70592&-\\_longitude=&-\\_changeMap=ZoomIn](http://factfinder.census.gov/servlet/ThematicMapFramesetServlet?_bm=y&-tree_id=403&-_MapEvent=displayBy%20tm_config=|b=50||=en|t=403|zf=0.0|ms=thm_def|dw=0.2020972103849424|dh=0.13193695645157985|dt=%20ov.census.aff.doma.in.map.EnglishMapExtent|if=gif|cx=-92.005|cy=30.0965|zl=5|pz=5|bo=|bl=|ft=350:349:335:389:388:332:331|fl=381:403:204:380:369:379:368|g=05000US22045|ds=DEC_2000_SF3_U|sb=50|tud=false|db=860|mn=0|mx=28.6|cc=1|cm=1|cn=5|cb=|um=Percent|pr=1|th=DEC_2000_SF3_U_M00075&-context=tm&-errMsg=&-states=%20&-all_geo_types=N&-_dBy=860&-redoLog=false&-_zoomLevel=&-street=&-tm_name=DEC_2000_SF3_U_M00075&-tm_config=|b=50||=en|t=403|zf=0.0|ms=thm_def|dw=0.6736573679497436|dh=0.4397898548385574|dt=gov.census.aff.domain.map.EnglishMapExtent|if=gif|cx=-92.0952465|cy=30.2071235|zl=6|pz=6|bo=|bl=|ft=350:349:335:389:388:332:331|fl=381:403:204:380:369:379:368|g=05000US22055|ds=DEC_2000_SF3_U|sb=50|tud=false|db=060|mn=6.9|mx=36.7|cc=1|cm=1|cn=5|cb=|um=Percent|pr=1|th=DEC_2000_SF3_U_M00075&-PANEL_ID=tm_result&-_pageY=&-_lang=en&-_pageX=&-geo_id=05000US22055&-CONTEXT=tm&-_mapY=&-_city=&-_mapX=&-_latitude=&-_pan=&-format=&-ds_name=DEC_2000_SF3_U&-zip=70592&-_longitude=&-_changeMap=ZoomIn)

## LAFAYETTE PARISH – NOTES

- ‘*Year 2000 Demographics - Age Groups*’ reports the highest number of people for age groups 35-44 (31,704; 16.6% of total population (190,503)), 25-34 (27,790; 14.6% of total population), and 45-54 (24,625; 12.9% of total population). Individuals 19 years of age or younger make up 58,883 (30.9% of total population). Individuals 65 years of age or older constitute 18,122 (9.5% of the total population (190,503)), with 7,301 male (3.8% of total population) and 10,821 female (5.7% of total population) individuals.
- ‘*Year 2000 Demographics - Race*’ reports 139,758 white (73.4% of total population), 45,346 black (23.8% of total population), 3,320 Hispanic or Latino (1.7% of total population) and 2,055 Asian (1.1% of total population) population.
- ‘*Year 2000 Demographics - Household by Type*’ reports 48,839 family households (67.5% of total households (72,372)), 23,533 nonfamily households (32.5% of total households) and 12,619 households with individuals 65 years and over (17.4% of total households). The average household size is 2.57 individuals and the average family size is 3.12 individuals.
- ‘*1999 Poverty Status by Age*’ shows 29,216 individuals with income below the poverty level (15.7% of total population (185,805)), of which 9,531 individuals are under 18 years of age (32.6% of population with income below poverty level; 5.1% of total population) and 2,639 individuals are over 65 years of age (9% of population with income below poverty level; 1.4% of total population).
- ‘*1999 Poverty Status by Age and Household Type – Under 65 Years*’ reports 26,577 individuals under 65 years of age with income below the poverty level (91% of people with income below the poverty level; 14.3% of total population (185,805)), of which 6,742 are in married-couple families (25.4% of individuals with income below the poverty level; 3.6% of total population), 12,991 are in other families, i.e. male householder and no wife present or female householder and no husband present, (48.9% of individuals with income below the poverty level; 7% of total population) and 6,844 are unrelated individuals (25.8% of individuals below the poverty level; 3.7% of total population).
- ‘*1999 Poverty Status by Age and Household Type – 65 years and over*’ reports 2,639 individuals over 65 years of age with income below poverty level (9% of population with income below poverty level; 1.4% of total population (185,805)), of which 631 are in married-couple families (23.9% of individuals with income below the poverty level; 0.3% of total population), 283 are in other families, i.e. male householder and no wife present or female householder and no husband present, (10.7% of individuals with income below the poverty level; 0.2% of total population) and 1,725 are unrelated individuals (65.4% of individuals below the poverty level; 0.9% of total population).
- ‘*1999 Poverty Status of Individuals – Age Groups*’ shows 9,531 individuals under 18 years of age below poverty level (18.6% of all income levels under 18 years), 9,302 related children under 18 below poverty level (18.2% of all income levels for related children under 18 years), 3,302 related children under 6 years below poverty level (20.2% of all income levels of related children under 6 years), 6,510 related children 5 to 17 years below poverty level (17.4% of all income levels for related children 5 to 17 years) and 2,639 individuals 65 years and over below poverty level (15.6% of all income levels of individuals 65 years of age and over).
- ‘*1999 Poverty Status of Individuals – Percent of Poverty Level*’ reports 13,702 individuals below 50 percent of poverty level (7.4% of total population (185,805)), 48,011 individuals below 150 percent of poverty level (25.8% of total population) and 65,440 individuals below 200 percent of poverty level (35.2% of total population).
- ‘*Percent of Persons below the Poverty Level in 1999 by 5-Digit ZIP Code Tabulation Area – Legend*’ depicts five areas with more than 2000 individuals below the poverty level:
  - Lafayette 70501: 9,166 individuals below poverty level (31.3% of adjusted population base for respective ZIP code area)
  - Lafayette 70506: 5,292 individuals below poverty level (14.8% of adjusted population base for respective ZIP code area)
  - Carencro 70520: 2,595 individuals below poverty level (18.2% of adjusted population base for respective ZIP code area)
  - Lafayette 70507: 2,496 individuals below poverty level (16.2% of adjusted population base for respective ZIP code area)
  - Lafayette 70508: 2,000 individuals below poverty level (7.5% of adjusted population base for respective ZIP code area)